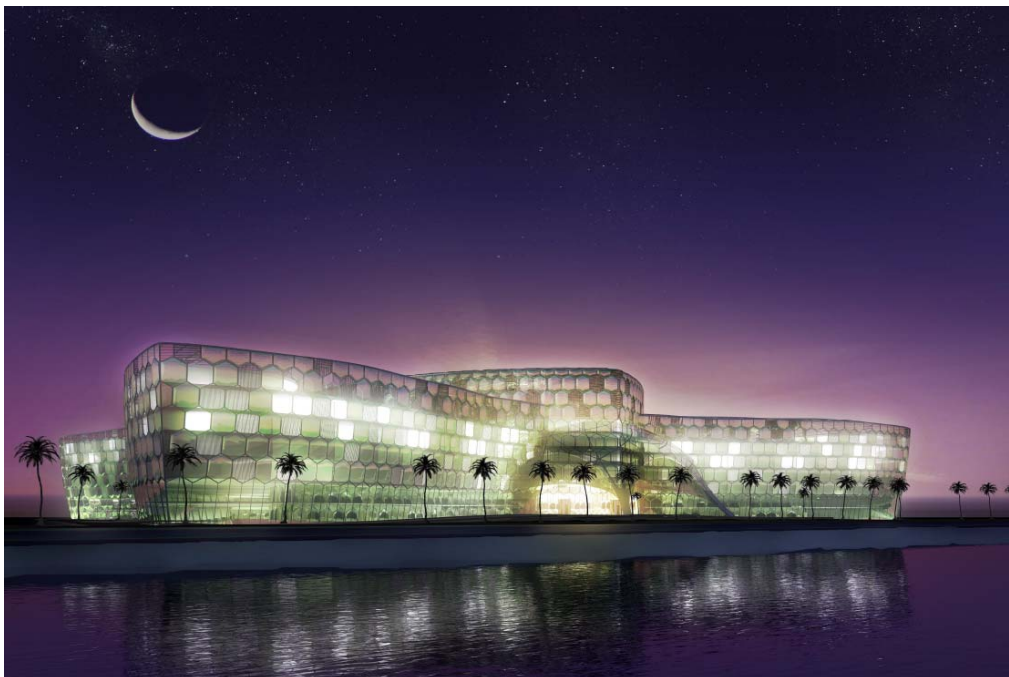


<b>project name</b>	Business- And Apartmentcomplex "Turtle"		
<b>owner</b>	Middle East Vision, Dubai (UAE)		
<b>architect</b>	AJG Ingenieure GmbH, Dubai Branch (UAE)		
<b>location</b>	Ras Al Khaimah (UAE)		
<b>project duration</b>	begin	august 2008	
	end	october 2008	

The emirate Ras Al Khaimah develops an artificial peninsula, Al Marjan Island, on reclaimed land in the Arabian Sea. One of the developments is the business- and apartmentcomplex "Turtle". With its unique arquitecture in form of a turtle, that makes reference to the local sea turtle, the building offers 178,000 sq.m (1,9 Msqft) of high class hotel, residence and office space. It includes several pools, see water aquarium, restaurants and retail areas.

building services  
featured projects



project visualization

**responsibilities**

project coordination and schematic design:

- water supply, vacuum sewerage waste water disposal, natural gas supply, chilled water supply, power supply
  - utilities service connections,
    - demand figures

